



# Resuscitation Catalog

***Mercury Medical***<sup>®</sup>  
Your Need . . . Our Innovation<sup>®</sup>

# Table of Contents

## Resuscitation Systems

|  |       |
|--|-------|
| Introduction to Mercury's BVM Product Line . . . . .   | 1,2   |
| BVM with Color-Coded Manometer . . . . .   | 3     |
| <b>Latex-Free BVM</b> . . . . .  | 4     |
| CPR-2 BVM with Optional Color-Coded Manometer . . . . .  | 5     |
| Reusable BVM with Optional Color-Coded Manometer . . . . .   | 6     |
| <b>Reusable BVM System</b> . . . . .   | 7     |
| End Tidal CO <sub>2</sub> Detectors . . . . .  | 8,9   |
| StatCO <sub>2</sub> <sup>®</sup> , Mini StatCO <sub>2</sub> <sup>®</sup> , Neo-StatCO <sub>2</sub> <Kg <sup>®</sup>  |       |
| Corrugated Flexible Tubing . . . . .   | 10,11 |
| Omni-Link <sup>®</sup> , Flex-Link <sup>®</sup>  |       |
| BVM Accessories/Descriptions . . . . .   | 12,13 |
| Exhalation Filter, Face Masks, Round Silicone Masks, Disconnect Wedge,<br>Omni-Link <sup>®</sup> , Flex-Link <sup>®</sup> , Peep Valve, Peep Valve with Built-In Filter, |       |
| BVM Accesories/Ordering Information . . . . .  | 14,15 |
| Exhalation Filter, Face Masks, Round Silicone Masks, Disconnect Wedge,<br>Omni-Link <sup>®</sup> , Flex-Link <sup>®</sup> , Peep Valve, Peep Valve with Built-In Filter, |       |
| Hyperinflation System . . . . .  | 16,17 |
| Hyperinflation System with built-in Safety Features  |       |
| Mapleson Anesthesia Circuits . . . . .   | 18,19 |
| Neo-Tee <sup>®</sup> Infant T-Piece Resuscitator . . . . .   | 20-23 |
| A Better Way to Deliver Positive Pressure Ventilation to Infants   |       |
| Neo-Tee <sup>®</sup> Matrix (quick guide) . . . . .  | 24    |

..... **BVM Product Ordering and BVM Specifications & Performance** .....  
*are located at back of catalog.*

Available Now . . .

## Latex-Free CPR, CPR-2, Reusable BVM'S 3 Resuscitation Systems



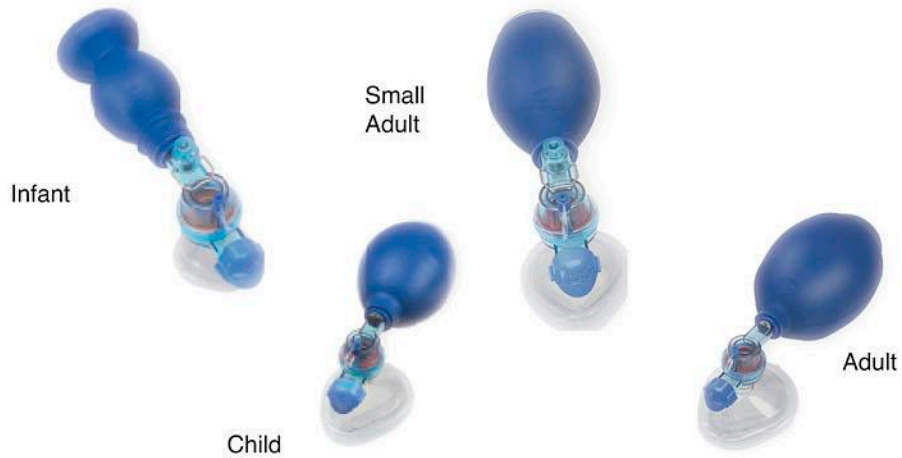
Finally . . .

*more affordable resuscitation systems & accessories with the  
Mercury Medical® quality you can count on.*

*Introducing an Outstanding Portfolio of Products . . .*

Latex-Free Resuscitation Bags (BVM's)

Latex-Free  
BVM Bags



Model CPR  
Latex-Free  
Synthetic Rubber



Model CPR-2  
Latex-Free PVC



Model CPR - Reusable  
Silicone



Hyperinflation System  
with Color-Coded Manometer  
and Pressure relief Valve  
(pop-off)  
See Pages  
16 & 17

# Mercury Medical's BVM Line with Optional Color-Coded Manometer

The Resuscitator Bag with Color-Coded Manometer allows for in-line monitoring of both airway and PEEP pressures.



Squeeze the resuscitator bag to ventilate and the manometer verifies airway pressure.

The Mercury Medical Disposable Color-Coded Manometer is ready when you need it.



Release squeeze on exhalation and the manometer verifies PEEP pressure (when PEEP valve is attached to the resuscitator).

## DARE to COMPARE

| Benefits  | Mercury Medical | Other Systems |
|---|-----------------|---------------|
| • Optional Color-Coded Manometer, accuracy is $\pm 3$ cm H <sub>2</sub> O between 0 - 15 cm H <sub>2</sub> O, $\pm 5$ cm H <sub>2</sub> O over 15 cm H <sub>2</sub> O | X               | -             |
| • Monitors both Airway and PEEP Pressure  | X               | -             |
| • Fast re-expansion/high breath-per-minute capability   | X               | -             |
| • Latex-Free Synthetic rubber (CPR original)  | X               | -             |
| • Optional colormetric CO <sub>2</sub> detector   | X               | -             |
| • Patient Valve detaches to add Omni-Link/Flex Link tubing that provides greater reach capability; Ideal for neonatal transport and MRI needs                         | X               | -             |
| • Optional Exhalation Filter and MRI Conditional PEEP Valve Accessory   | X               | -             |



0 - 40 cm



0 - 60 cm

### ORDERING INFORMATION ... Manometers

| Product # | Description   |        |
|-----------|---|--------|
| #10-55350 | Single-Patient Use Pressure Manometer, 0-60 cm H <sub>2</sub> O                         | 20/Box |
| #10-55352 | Color-Coded Manometer, Single-Patient-Use, 0 - 40 cm H <sub>2</sub> O                   | 20/Box |
| #10-55353 | Color-Coded Manometer, Single-Patient-Use, Left Orientation, 0 - 40 cm H <sub>2</sub> O | 20/Box |
| #10-55354 | Color-Coded Manometer, Single-Patient-Use, Right Orientation 0 - 40 cm H <sub>2</sub> O | 20/Box |
| #10-55356 | Manometer with Tee, Left Orientation, 0-60 cm H <sub>2</sub> O                          | 20/Box |
| #10-55357 | Manometer with Tee, Right Orientation, 0-60 cm H <sub>2</sub> O                         | 20/Box |

Left Orientation



Right Orientation



# Mercury Medical's Latex-Free BVM Bags

Mercury Medical's BVM Bags are designed to accommodate the most urgent and unique situations of on-site EMS, Hospital I.C.U., E.R., O.R. and Recovery Room needs.



Adult BVM Bag

### Patients Over 30 kgs

|                       |               |        |        |
|-----------------------|---------------|--------|--------|
| Maximum Rate          | 92 BPM        |        |        |
| Maximum Volume        | 900 - 1500 ml |        |        |
| Pressure Relief Valve | (Optional)    |        |        |
| Oxygen Concentration  |               |        |        |
| LPM                   | 3             | 5      | 10     |
| Rate                  | 12            | 12     | 12     |
| Tidal Volume          | 500 ml        | 500 ml | 500 ml |
| W/Reservoir           | 68%           | 95%    | 100%   |
| W/O Reservoir         | 34%           | 47%    | 70%    |
| Measured Volume       |               |        |        |
| Bag                   | 1600 ml       |        |        |
| Reservoir             | 2600 ml       |        |        |



Child BVM Bag

### Patients Between 7 and 30 kgs

|                       |                        |
|-----------------------|------------------------|
| Maximum Rate          | 168 BPM                |
| Maximum Volume        | 360 ml                 |
| Pressure Relief Valve | 40 cm H <sub>2</sub> O |
| Oxygen Concentration  |                        |
| LPM                   | 10                     |
| Rate                  | 20                     |
| Tidal Volume          | 250 ml                 |
| W/Reservoir           | 100%                   |
| W/O Reservoir         | 85%                    |
| Measured Volume       |                        |
| Bag                   | 500 ml                 |
| Reservoir             | 2600 ml                |



Small Adult BVM Bag

### Patients Over 30 kgs

|                       |              |        |        |
|-----------------------|--------------|--------|--------|
| Maximum Rate          | 110 BPM      |        |        |
| Maximum Volume        | 500 - 750 ml |        |        |
| Pressure Relief Valve | (Optional)   |        |        |
| Oxygen Concentration  |              |        |        |
| LPM                   | 3            | 5      | 10     |
| Rate                  | 12           | 12     | 12     |
| Tidal Volume          | 500 ml       | 500 ml | 500 ml |
| W/Reservoir           | 68 %         | 95 %   | 100 %  |
| W/O Reservoir         | 34 %         | 47 %   | 70 %   |
| Measured Volume       |              |        |        |
| Bag                   | 1000 ml      |        |        |
| Reservoir             | 2600 ml      |        |        |

U.S. Patent #5,357,951



Infant BVM Bag

### Patients Under 7 kgs

|                       |                        |
|-----------------------|------------------------|
| Maximum Rate          | 180+ BPM               |
| Maximum Volume        | 175 ml                 |
| Pressure Relief Valve | 40 cm H <sub>2</sub> O |
| Oxygen Concentration  |                        |
| LPM                   | 4                      |
| Rate                  | 30                     |
| Tidal Volume          | 40 ml                  |
| W/Reservoir           | 100%                   |
| W/O Reservoir         | 85%                    |
| Measured Volume       |                        |
| Bag                   | 240 ml                 |
| Reservoir             | 600 ml                 |

*Latex-Free BVM Bags including Infant, Child, Small Adult and Adult*

# Mercury Medical's BVM, CPR-2 Model Bags with Optional Color-Coded Manometer



The CPR-2 is a full line of resuscitators manufactured with new thermoplastic (PVC) bag material providing superior lung compliance “feel” with exceptional responsiveness. The CPR-2 now offers clinicians a choice of the same unparalleled quality performance and accessories as the regular synthetic rubber CPR bag product line.

Squeeze the resuscitator bag to ventilate and the manometer verifies airway pressure.



Release squeeze on exhalation and the manometer verifies PEEP pressure (when PEEP valve is attached to the resuscitator).



| BENEFITS  | MERCURY MEDICAL | OTHER SYSTEMS |
|---|-----------------|---------------|
| • Optional Color-Coded Manometer, accuracy is $\pm 3$ cm H <sub>2</sub> O between 0 - 15 cm H <sub>2</sub> O, $\pm 5$ cm H <sub>2</sub> O over 15 cm H <sub>2</sub> O | X               | -             |
| • Monitors both Airway and PEEP Pressure  | X               | -             |
| • Fast re-expansion/high breath-per-minute capability   | X               | -             |
| • Latex-Free medical grade thermoplastic (PVC) bag material   | X               | X             |
| • Optional colorimetric CO <sub>2</sub> detector accessory  | X               | -             |
| • Patient Valve detaches to add Omni-Link/ Flex-Link tubing that provides greater reach capability, ideal for neonatal transport and MRI needs                        | X               | -             |
| • Optional Exhalation Filter and MR Conditional Peep Valve accessory  | X               | -             |

U.S. Patent #5,357,951, #5,557,049

The Resuscitation Bag with Color-Coded Manometer allows for in-line monitoring of both airway and PEEP pressures.

*The Mercury Medical Disposable Color-Coded Manometer is ready when you need it.*

# Mercury Medical's Reusable BVM Bags with Optional Color-Coded Manometer

## Take the guesswork out of finding quality reusable resuscitators.

The Reusable CPR Resuscitation System is a full line of resuscitators manufactured with Silicone and Polysulfone material providing superior lung compliance “feel” with exceptional responsiveness.

The Reusable resuscitation system is designed to be fully autoclavable, with the exception of certain accessories and replacement items such as the reservoir bag, oxygen tubing and accessories.

| BENEFITS  |
|---|
| • Optional Color-Coded Manometer, accuracy is $\pm 3$ cm H <sub>2</sub> O between 0 - 15 cm H <sub>2</sub> O, $\pm 5$ cm H <sub>2</sub> O over 15 cm H <sub>2</sub> O |
| • Monitors both Airway and PEEP Pressure.   |
| • Fast re-expansion/high breath-per-minute capability.  |
| • Medical grade Silicone and Polysulfone material.  |
| • Autoclavable temperature 132° C (except reservoir bag, oxygen tubing and disposable accessories).   |
| • Optional colorimetric CO <sub>2</sub> detector accessory.   |
| • Patient Valve detaches to add Omni-Link or Flex-Link tubing that provides greater reach capability. Ideal for neonatal and MRI needs.                               |
| • Optional Exhalation Filter and MR Conditional Peep Valve accessory.   |

U.S. Patent #5,357,951, #5,557,049



Squeeze the resuscitator bag to ventilate and the manometer verifies airway pressure.



Release squeeze on exhalation and the manometer verifies PEEP pressure (when PEEP valve is attached to the resuscitator).

The Resuscitation Bag with optional Color-Coded Manometer allows for in-line monitoring of both airway and PEEP pressures.



# Available Now . . .

## Reusable BVM Resuscitation System



*the reusable resuscitation system with  
the Mercury Medical quality you can count on.*

1/Box  
Adult, Child, Infant Reusable CPR  
ORDERING INFORMATION

| Product  | Mask Size         | O2 Reservoir Bag | O2 Tubing |
|----------|-------------------|------------------|-----------|
| 10-50700 | Adult Size 5      | X                | 10'       |
| 10-50704 | Child Size 3      | X                | 10'       |
| 10-50706 | Infant Size 0 & 1 | X                | 10'       |

# Mercury Medical's First Full Line of End Tidal CO<sub>2</sub> Detectors

After successfully completing initial positive ET tube placement verification with an end-tidal CO<sub>2</sub> detector, how often do you find that the intubated patient needs to be moved or transported?

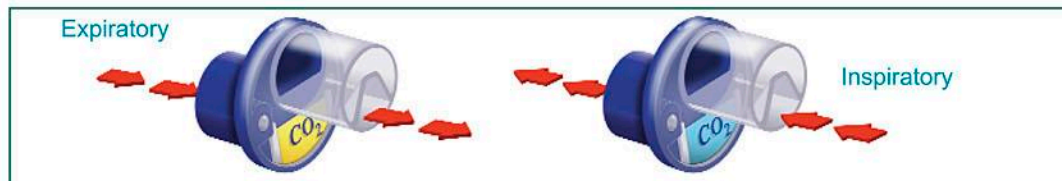
The AHA guidelines state, "tracheal tube dislodgements . . . may be occurring at much higher rates than previously suspected."<sup>1</sup>

The Neo-StatCO<sub>2</sub>® <Kg, allows clinicians to comply with Neonatal Resuscitation guidelines requiring CO<sub>2</sub> detectors as an adjunct for proper tube placement verification. "An increasing heart rate and CO<sub>2</sub> detection are the primary methods for confirming endotracheal tube placement."<sup>2</sup>

With one StatCO<sub>2</sub>®, Mini StatCO<sub>2</sub>® or NeoStatCO<sub>2</sub>® you can monitor proper ET tube placement initially and as often as necessary after each move within a 24-hour period . . . they also reliably continue to work in up to 100% humidity.

All of these CO<sub>2</sub> detectors have a vivid breath-to-breath color change advantage. StatCO<sub>2</sub> and Mini StatCO<sub>2</sub> include a convenient pull tab activation strip that protects them until you need them.

The Neo-StatCO<sub>2</sub> <Kg has a vivid breath-to-breath color change as shown in the illustration.



Neo-StatCO<sub>2</sub> <Kg®  
0.25 kg - 6 kgs



Mini StatCO<sub>2</sub>®  
1 - 15 kgs



StatCO<sub>2</sub>®  
over 15 kgs



Actual product sizes not shown.

Patent # US 6,502,573 B1, # US 7,578,971 B2, # US 8,256,414 B2  
Other Patents Pending

1. AHA Guidelines 2000 for Cardiopulmonary Resuscitation and Emergency Cardiovascular Care, Part 6. p. 1-87.
2. Neonatal Resuscitation, 5th Edition, 2006, Lesson 5, p. 5-17.

# Mercury Medical's End Tidal CO<sub>2</sub> Detectors



Actual product size  
not shown.

| StatCO <sub>2</sub> | Mini StatCO <sub>2</sub> | Neo-StatCO <sub>2</sub> <Kg | Benefits   | Mercury Medical | Other Systems |
|---------------------|--------------------------|-----------------------------|--|-----------------|---------------|
| X                   | X                        | X                           | • Functions for a full 24 hours                    | X               | -             |
| X                   | X                        | X                           | • Reliable at 100% humidity                        | X               | -             |
| X                   | X                        |                             | • Convenient Pull Tab available "when you need it" | X               | -             |
| X                   | X                        |                             | • Detects up to 50 breaths-per-minute              | X               | -             |
|                     |                          | X                           | • Detects up to 100 breaths-per-minute             | X               | -             |
| X                   | X                        | X                           | • Vivid breath-to-breath color change              | X               | -             |

Note:  
2 year expiration  
from date of manufacture.



*StatCO<sub>2</sub><sup>®</sup>, Mini StatCO<sub>2</sub><sup>®</sup>,  
Neo-StatCO<sub>2</sub> <Kg<sup>®</sup> ...  
Verification with  
Enhanced economy, reliability  
and convenience.*

## ORDERING INFORMATION

| Item #    | Description   | Packaged |
|-----------|---|----------|
| #10-55370 | <b>StatCO<sub>2</sub></b><br>End Tidal CO <sub>2</sub> Detector<br>(for patient body weight<br>greater than 15 Kg.)                 | 20/Box   |
| #10-55371 | <b>Mini StatCO<sub>2</sub></b><br>End Tidal CO <sub>2</sub> Detector<br>(for patient body weight<br>between 1 and 15 Kg.)           | 20/Box   |
| #10-55373 | <b>Neo-StatCO<sub>2</sub> &lt; Kg</b><br>End Tidal CO <sub>2</sub> Detector<br>(for patient body weight<br>between 0.25 kg - 6 kgs) | 20/Box   |

# OMNI-LINK® & FLEX-LINK®

## Family of Expansion Tubing

Resuscitating a patient can create compromising situations during transport. With that in mind, Mercury has developed the Omni-Link and Flex-Link family of expansion tubing to provide greater flexibility and longer reach capabilities. Each coupled with Mercury Medical's unique patient valve, the Omni-Link or Flex-Link does not add dead space to the patient circuit.

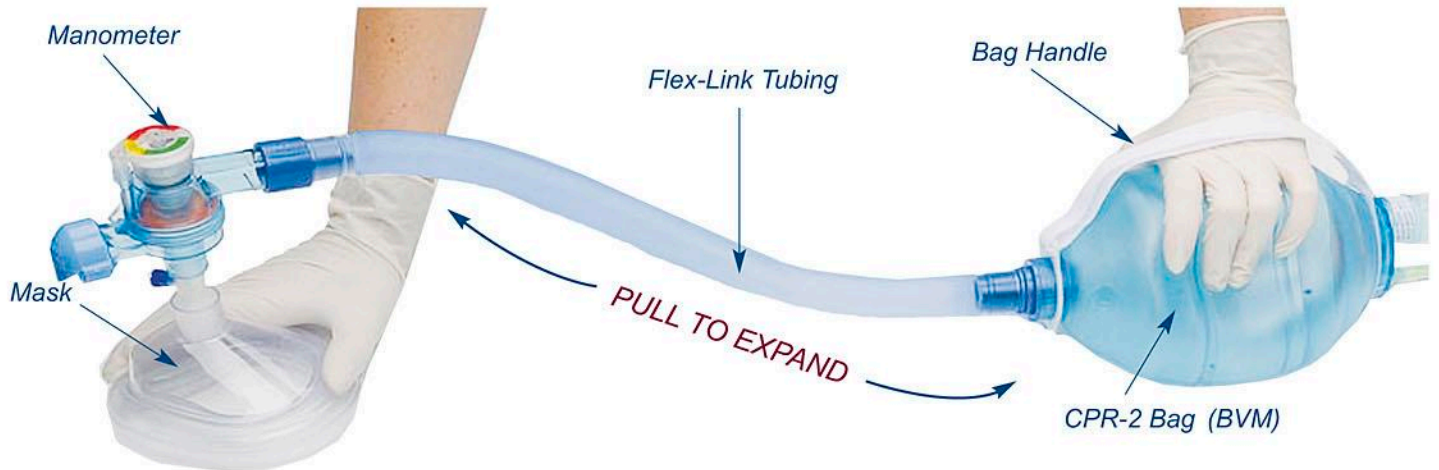


**Omni-Link**

6"

12"

**Flex-Link**



Manometer

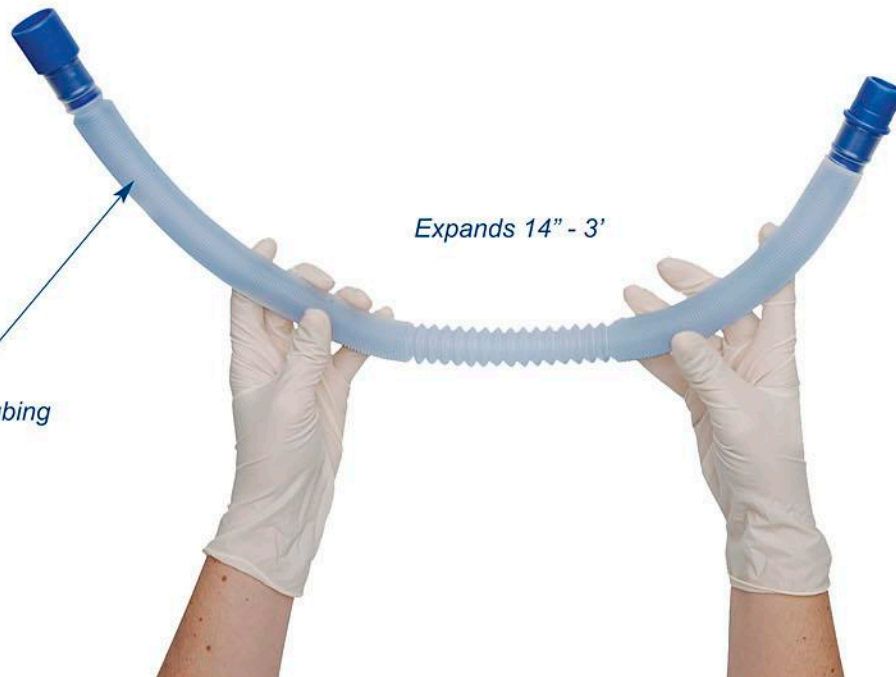
Mask

Flex-Link Tubing

Bag Handle

CPR-2 Bag (BVM)

PULL TO EXPAND



Expanded Flex-Link Tubing

Expands 14" - 3'

# OMNI-LINK® & FLEX-LINK®

## Omni-Link®

### Features

- Flexible corrugated tubing
- Available in 6" and 12" segments that can be interconnected to give you your desired length

### Benefits

- Absorbs movement
- Provides greater versatility and longer reach capabilities
- Reduces arm fatigue and airway trauma
- Helps eliminate accidental disconnects and extubations

## Flex-Link®

### Features

- Flexible, expandable and collapsible tubing
- Available in collapsed 14" length, but can be lengthened up to 3' when expanded

### Benefits

- Length desired for patient reach is defined by user
- Provides greater versatility and longer reach capabilities
- Reduces arm fatigue and potential for airway trauma
- Helps eliminate accidental disconnects and extubations
- Enables free movement of patient's head when intubated

### CPR BAG



Synthetic Rubber

### CPR-2 BAG



PVC

## ORDERING INFORMATION

### Omni-Link

| Part #    | Description              | Packaged |
|-----------|--------------------------|----------|
| #10-55360 | Omni-Link (12" length)   | 50/Box   |
| #10-55361 | Omni-Link II (6" length) | 25/Box   |

### Flex-Link

| Part #    | Description   | Packaged |
|-----------|---|----------|
| #10-56024 | Adult PVC CPR-2 Bag, Aero Reservoir, Mask, Manometer, Flex-Link and Bag Handle                    | 6/Box    |
| #10-56025 | Adult PVC CPR-2 Bag, Aero Reservoir, Mask, Flex-Link and Bag Handle                               | 6/Box    |
| #10-56026 | Adult PVC CPR-2 Bag, O <sub>2</sub> Reservoir Bag, Mask, Manometer, Flex-Link and Bag Handle      | 6/Box    |
| #10-56027 | Adult PVC CPR-2 Bag, O <sub>2</sub> Reservoir Bag, Mask, Flex-Link and Bag Handle                 | 6/Box    |
| #10-56034 | Adult PVC CPR-2 Bag, O <sub>2</sub> Reservoir Bag, Mask, Flex-Link, StatCO <sub>2</sub>           | 6/Box    |
| #10-56040 | Adult PVC CPR-2 Bag, No Bag Handle, O <sub>2</sub> Reservoir, Flex-Link                           | 6/Box    |
| #10-56041 | Adult PVC CPR-2 Bag, No Bag Handle, Mask, Aerosol Reservoir, Flex-Link                            | 6/Box    |
| #10-55079 | Adult CPR Standard O <sub>2</sub> Bag Reservoir, Intersurgical Quadralite™ Size 3 Mask, Flex-Link | 6/Box    |
| #10-56309 | Adult PVC CPR-2 Bag, Expandable Reservoir, Mask, Manometer, Flex-Link and Bag Handle              | 12/Box   |
| #10-56310 | Adult PVC CPR-2 Bag, Expandable Reservoir, Mask, Flex-Link and Bag Handle                         | 12/Box   |
| #10-55362 | Flex-Link (36" extended)  | 25/Box   |
| #10-55363 | Flex-Link (36" extended)  | 50/Box   |

# Mercury Medical's BVM Bag Accessories & Description



Exhalation Filter

The filter utilizes three methods of filtration:

1. Multi-layered media
2. Electrostatic attraction
3. Impaction

#### FEATURES:

- Proprietary spun polypropylene
- Integral hydrophobic filter

#### BENEFITS:

- Repels water, yet allows water vapor to pass through.
- Offers low resistance to gas flow.
- Clear housing allows continuous monitoring during use.

Mercury Medical's **Face Masks** are anatomically contoured to conform to natural facial profiles allowing a secure, low pressure seal without sharp edges that could damage the eyes.



Face Masks

#### FEATURES:

- Completely disposable
- Clear material construction
- Anatomically designed
- Soft, pliable, air-filled cushion
- Removable color-coded hook ring fastener

#### BENEFITS:

- Eliminates cross-contamination risks and associated reprocessing costs.
- Better patient visualization.
- Accommodates a wide range of facial features and reduces patient discomfort.
- Reduces wrinkles or creases and allows for a secure low pressure seal.
- Allows for use of traditional headstraps.



Round Silicone Masks

Features anatomically correct "average" contour for infant faces. Provides overall tight seal with internal cavity, minimizing dead space. Designed specifically for children under the age of ten (10).



Disconnect Wedge

Mercury Medical's® Disconnect Wedge provides quick and easy disconnects for most 15mm connections on endotracheal tubes.

#### FEATURES:

Small, lightweight wedge unit

#### BENEFITS:

Provides quick and easy disconnects for most 15mm connections with grasping surfaces, minimizes trauma to the airway during necessary disconnects, helps to eliminate accidental disconnects and extubations, eliminates twisting and pulling and reduces airway trauma.

# Mercury Medical's BVM Bag Accessories & Descriptions



OMNI-LINK®



FLEX-LINK®

Resuscitating a patient can create compromising situations.

OMNI-LINK/FLEX-LINK flexible, corrugated tubing provides greater flexibility and longer reach capabilities. Coupled with Mercury Medical's unique patient valve, the OMNI-LINK and FLEX-LINK do not add dead space to the patient circuit.

## FEATURES . . . OMNI-LINK

- Flexible, corrugated tubing
- Available in 6" and 12" segments that can be interconnected

## FEATURES . . . FLEX-LINK

- Flexible expansion hose from 14" to 3'

## BENEFITS:

- Absorbs movement.
- Provides greater versatility and longer reach capabilities.
- Reduces arm fatigue and airway trauma.
- Helps to eliminate accidental disconnects and extubations.



PEEP Valve



PEEP Valve with Built-in Filter

The PEEP Valve works by applying an internal gas pressure to hold the alveolus open throughout inspiration and expiration. This internal pressure aids in the prevention of atelectasis and associated shunt conditions.<sup>1</sup>

## FEATURES:

- Built-in damping mechanism
- 30mm female fitting

## BENEFITS:

- Reduces noise.
- Conforms to ISO inlet standards.



Use an MR system with a static magnetic field of 3.0 Tesla or less.  
Use an MR system with a spatial gradient of 450 gauss/cm or less.

1. Reference: Roger C. Bone, David H. Eubanks, Comprehensive Respiratory Care. The C.V. Mosby Co., St. Louis. 1990;23:684.

# Mercury Medical's BVM Bag Accessories & Ordering Information



Exhalation Filter

### ORDERING INFORMATION

| ITEM NUMBER | DESCRIPTION                                       |
|-------------|---|
| 10-55375    | Exhalation Filter 30mm O.D. x 30mm I.D.<br>20/Box |



Face Masks

### ORDERING INFORMATION

| ITEM NUMBER | DESCRIPTION                            |
|-------------|--|
| 10-50500    | Adult Large Clear Anatomical<br>30/Box |
| 10-50501    | Adult Small Clear Anatomical<br>30/Box |
| 10-50502    | Child Clear Anatomical Face<br>20/Box  |
| 10-50503    | Pediatric Clear Anatomical<br>20/Box   |
| 10-50504*   | Infant Clear Anatomical<br>20/Box      |
| 10-50505*   | Neonatal Clear Anatomical<br>20/Box    |

*\*NOTE: Hook Ring Fastener not available on these sizes.*



Round Silicone Masks

### ORDERING INFORMATION

| ITEM NUMBER | DESCRIPTION      |
|-------------|------------------|
| 10-50601    | Size 0<br>10/Box |
| 10-50602    | Size 1<br>10/Box |
| 10-50603    | Size 2<br>10/Box |



Intersurgical  
QuadraLite Masks

### ORDERING INFORMATION

| ITEM NUMBER | DESCRIPTION  |        |
|-------------|--|--------|
| DM-7194     | Adult QuadraLite, #4 Green Face Mask, soft, comfortable anatomically-shaped with color-coded seal        | 50/Box |
| DM-7193     | Small Adult QuadraLite, #3 Yellow Face Mask, soft, comfortable anatomically-shaped with color-coded seal | 50/Box |
| DM-7192     | Child QuadraLite, White Face Mask, #2 soft, comfortable anatomically-shaped with color-coded seal        | 50/Box |
| DM-7191     | Infant QuadraLite, Gray Face Mask, #1 soft, comfortable anatomically-shaped with color-coded seal        | 50/Box |



Disconnect Wedge

### ORDERING INFORMATION

| ITEM NUMBER | DESCRIPTION      |        |
|-------------|------------------|--------|
| 10-55340    | Disconnect Wedge | 50/Box |



# Mercury Medical's BVM Bag Accessories & Ordering Information

## ORDERING INFORMATION



OMNI-LINK®



FLEX-LINK®

| ITEM NUMBER | DESCRIPTION  |                        |
|-------------|--------------|------------------------|
| 10-55360    | OMNI-LINK    | 12" Length<br>50/Box   |
| 10-55361    | OMNI-LINK II | 6" Length<br>25/Box    |
| 10-55362    | FLEX-LINK    | 36" Extended<br>25/box |
| 10-55363    | FLEX-LINK    | 36" Extended<br>50/box |

|          |  |        |
|----------|--|--------|
| 10-56024 | Adult PVC CPR-2 bag, Aero Reservoir, Mask, Manometer, Flex-Link and Bag Handle       | 6/Box  |
| 10-56025 | Adult PVC CPR-2 Bag, Aero Reservoir, Mask, Flex-Link and Bag Handle                  | 6/Box  |
| 10-56026 | Adult PVC CPR-2 Bag, O2 Reservoir Bag, Mask, Manometer, Flex-Link and Bag Handle     | 6/Box  |
| 10-56027 | Adult PVC CPR-2 Bag O2 Reservoir Bag, Mask, Flex-Link and Bag Handle                 | 6/Box  |
| 10-56309 | Adult PVC CPR-2 Bag, Expandable Reservoir, Mask, Manometer, Flex-Link and Bag Handle | 12/Box |
| 10-56310 | Adult PVC CPR-2 Bag, Expandable Reservoir, Mask, Flex-Link and Bag Handle            | 12/Box |



PEEP Valve



PEEP Valve with Built-in Filter



PEEP Adapter

| ITEM NUMBER              | DESCRIPTION                                   |        |
|--------------------------|---|--------|
| 10-55330                 | PEEP Valve 30mm with 22mm Adapter             | 12/Box |
| 10-55331                 | PEEP Valve with built-in Filter               | 12/Box |
| <b>FOR REUSABLE ONLY</b> |   |        |
| 10-55310                 | PEEP Adapter                                  | 12/Box |
| 10-55315                 | PEEP Valve and PEEP Adapter (MRI Conditional) | 12/Box |

### Specifications - PEEP VALVE

- Range: 0 - 20 cm H<sub>2</sub>O
- Port Size: 30 mm Female Fitting (per ISO 5356-1)
- MR Conditional: Static magnetic field of 3.0 Tesla or less
- Spatial Gradient of 720 gauss/cm or less

### Specifications: Filter

- Bacterial Filter Efficiency (BFE) Viral Filter Efficiency (VFE)
- Mean Efficiency: >99.9%
- Resistance to Flow: 10.2 mm H<sub>2</sub>O at 8.0 LPM Flow

# Mercury Medical's Hyperinflation System

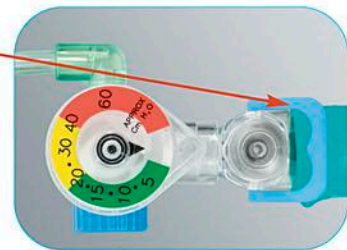


Mercury's Hyperinflation Systems come equipped with an optional built-in color-coded manometer. This easy-to-read manometer offers improved visibility of pressure ranges. They are always ready to perform when you need a comprehensive Hyperinflation System with Manometer.

The in-line position allows you to watch the patient during ventilation while monitoring pressure. The optional pressure relief valve is set at 40 cm of H<sub>2</sub>O.

Patent # US D436,050, Patent # US 5,557,049 B1

When higher inspiratory pressure is necessary, the pressure relief valve can be closed with the attached lock clip.



*Now available  
with optional Color-Coded Manometer  
and optional Pressure Relief Valve (pop-off)*

# Mercury Medical's Hyperinflation System



| Benefits   | Mercury Medical | Other Systems |
|--|-----------------|---------------|
| • Color-Coded Manometer, accurate to $\pm 3$ cm H <sub>2</sub> O between 0 - 15 cm H <sub>2</sub> O, $\pm 5$ cm H <sub>2</sub> O over 15 cm H <sub>2</sub> O | X               | -             |
| • 40 cm H <sub>2</sub> O Pop-Off   | X               | -             |
| • 3 Pleat Latex-Free Ventilation Bag   | X               | -             |
| • Stay Put Bleed Valve   | X               | -             |
| • Pre-assembled Oxygen Tubing with Swivel  | X               | -             |
| • 360° Patient Valve Swivel  | X               | -             |

## ORDERING INFORMATION

| Item #   | Description  | Qty.   |
|----------|--|--------|
| 10-55800 | 1/2 liter hyperinflation system, no mask, no manometer, 10' manometer tubing, 10' oxygen tubing                | 20/Box |
| 10-55801 | 1/2 liter hyperinflation system, with mask, no manometer, 10' manometer tubing, 10' oxygen tubing              | 20/Box |
| 10-55802 | 1/2 liter hyperinflation system, no mask, with manometer, 10' oxygen tubing                                    | 20/Box |
| 10-55803 | 1/2 liter hyperinflation system, with mask, with manometer, 10' oxygen tubing                                  | 20/Box |
| 10-55804 | 1 liter hyperinflation system, no mask, no manometer, 10' manometer tubing, 10' oxygen tubing                  | 20/Box |
| 10-55805 | 1 liter hyperinflation system, with mask, no manometer, 10' manometer tubing, 10' oxygen tubing                | 20/Box |
| 10-55806 | 1 liter hyperinflation system, no mask, with manometer, 10' oxygen tubing                                      | 20/Box |
| 10-55807 | 1 liter hyperinflation system, with mask, with manometer, 10' oxygen tubing                                    | 20/Box |
| 10-55808 | 2 liter hyperinflation system, no mask, no manometer, 10' manometer tubing, 10' oxygen tubing                  | 20/Box |
| 10-55809 | Hyperinflation Elbow Assembly, manometer, 10' oxygen tubing  | 20/Box |
| 10-55810 | 2 liter hyperinflation system, no mask, 10' oxygen tubing  | 20/Box |
| 10-55813 | Hyperinflation Elbow Assembly  | 20/Box |
| 10-55814 | 1/2 liter hyperinflation system, with infant mask, neonatal mask, no manometer, 10' oxygen tubing              | 20/Box |
| 10-55815 | 3 liter hyperinflation system, no mask, no manometer, 10' oxygen tubing, 10' manometer tubing                  | 20/Box |
| 10-55817 | 2 liter hyperinflation system, no mask, no manometer, 10' oxygen tubing, 10' manometer tubing                  | 20/Box |
| 10-55818 | 1/2 liter hyperinflation system, with manometer, neonatal mask, 10' oxygen tubing, no swivel                   | 20/Box |
| 10-55819 | 1/2 liter hyperinflation system, with manometer, no mask, 10' oxygen tubing, 6" Omni-Link                      | 20/Box |
| 10-55820 | 1 liter hyperinflation system, with manometer, no mask, 10' oxygen tubing, 6" Omni-Link                        | 20/Box |
| 10-55821 | 2 liter hyperinflation system, with manometer, no mask, 10" oxygen tubing, 6" Omni-Link                        | 20/Box |
| 10-55822 | 1/2 liter hyperinflation system, with mask, no manometer, 7' oxygen tubing, 7' manometer tubing                | 20/Box |
| 10-55824 | 1/2 liter hyperinflation system, no mask, 10' oxygen tubing, in-line (tee) manometer                           | 20/Box |
| 10-55825 | 1/2 liter hyperinflation system, with mask, 10' oxygen tubing, 7' manometer tubing                             | 20/Box |
| 10-55826 | 1/2 liter hyperinflation system, 7' oxygen tubing, 7' manometer tubing   | 20/Box |
| 10-55830 | 1/2 liter hyperinflation system, no mask, no manometer, 10' manometer tubing, 10' oxygen tubing with pop-off   | 20/Box |
| 10-55831 | 1/2 liter hyperinflation system, with mask, no manometer, 10' manometer tubing, 10' oxygen tubing with pop-off | 20/Box |
| 10-55832 | 1/2 liter hyperinflation system, no mask, with manometer, 10' oxygen tubing with pop-off                       | 20/Box |
| 10-55833 | 1/2 liter hyperinflation system, with mask, with manometer, 10' oxygen tubing with pop-off                     | 20/Box |
| 10-55834 | 1 liter hyperinflation system with pop-off, no mask, manometer, 10' oxygen tubing                              | 20/Box |
| 10-55835 | 1 liter hyperinflation system with pop-off, infant mask, manometer, 10' oxygen tubing                          | 20/Box |
| 10-55836 | 1/2 liter hyperinflation system with pop-off, neonatal mask, manometer, 7' oxygen tubing                       | 20/Box |
| 10-55840 | 1/2 liter hyperinflation system, no mask, manometer, 10' oxygen tubing, colored label for bag size             | 20/Box |
| 10-55841 | 1 liter hyperinflation system, no mask, manometer, 10' oxygen tubing, colored label for bag size               | 20/Box |
| 10-55843 | 1/2 liter hyperinflation system, with mask, manometer, 10' oxygen tubing, 22mm cap with strap                  | 20/Box |
| 10-55844 | 2 liter hyperinflation system, with pop-off, integrated manometer, 10' oxygen tubing                           | 20/Box |

|          | Bag only | 500 cc Bag | 1000 cc Bag | 2000 cc Bag | 3000 cc Bag | Qty.   |
|----------|----------|------------|-------------|-------------|-------------|--------|
| 10-55391 | X        |            | X           |             |             | 20/Box |
| 10-55392 | X        |            |             | X           |             | 20/Box |
| 10-55393 | X        |            |             |             | X           | 20/Box |
| 10-55395 | X        | X          |             |             |             | 20/Box |

NOTE: Custom configurations available.

## The "Dual-Purpose" Mapleson, ANESTHESIA CIRCUITS



Connect to anesthesia machine. Or, connect to standard O<sub>2</sub> source.

**Mercury's new "Dual-Purpose" Mapleson will provide all of the features you've been accustomed to plus the following advantages:**

- Built-in, Color Coded Manometer\* – Offers convenient viewing of airway pressure and PEEP pressure.
- Continued Resuscitation – Once circuit is removed from anesthesia machine, simply connect circuit to a standard oxygen source and continue resuscitating patient on the way to recovery.
- Unique, Universal Singleton Connector – Enables the circuit to be reconnected to a standard oxygen source during patient transport. (Fits on most anesthesia machines)
- Bag Tail Bleed Valve – Simple and easy to use and stays in position.

Contact Mercury for more information and see for yourself how our Dual-Purpose Mapleson will make your patient transfer easier than ever.

See some of our other popular Mapleson configurations too.



\*Accuracy is +/- 3 cm H<sub>2</sub>O between 0-15 cm H<sub>2</sub>O and +/- 5 cm H<sub>2</sub>O above 15 cm H<sub>2</sub>O.

## The "Dual-Purpose" Mapleson, ANESTHESIA CIRCUITS

*"We like Mercury's Dual-Purpose Mapleson Circuit; it's so easy to keep patients ventilated while transporting them to recovery."*

- Dr. Adrienne Singleton, MD,  
Vidant Medical Center (formerly Pitt County Memorial Hospital),  
Greenville, NC



Dual-Purpose, Universal 'Singleton' Connector

Connect to anesthesia machine.  
Or, connect to standard O<sub>2</sub> source.

### Ordering Information for Dual-Purpose Mapleson Circuit



| Part Number | Description   | Quantity |
|-------------|---|----------|
| 10-80352    | 1 liter bag, manometer with tee, Washington tee, 10' oxygen tubing, 12" corrugated tubing, gas sampling elbow, bag tail bleed valve | 20/Box   |
| 10-80353    | 3 liter bag, manometer with tee, Washington tee, 10' oxygen tubing, 12" corrugated tubing, gas sampling elbow, bag tail bleed valve | 20/Box   |
| 10-80365    | 2 liter bag, Washington tee, 7' oxygen tubing, 36" corrugated tubing, standard elbow, cut bag tail                                  | 20/Box   |

### Other Mapleson Circuit Configurations

| Part Number | Description  | Quantity |
|-------------|--|----------|
| 10-80356    | 1/2 liter bag, Washington tee, 7' oxygen tubing, manometer tubing 4', gas sampling elbow, cut bag tail | 20/Box   |

For more part codes, refer to Mercury's Website. Custom configurations are available per request.  
(Minimum 10 boxes/order)





# Neo-Tee<sup>®</sup>

## The Next GENERATION

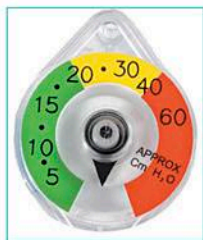
The First and Only Disposable Infant T-Piece Resuscitator

Now with 2 Configurations

Choice of Manometers

0 - 60 cm H<sub>2</sub>O

0 - 40 cm H<sub>2</sub>O



Portable, Built-in  
Color-Coded Manometer

New In-Line Controller  
allows clinicians to change  
airway pressure closer to the patient.



The New Neo-Tee  
Configuration  
Controller 12" from TEE

**Mercury Medical<sup>®</sup>**  
Your Need... Our Innovation



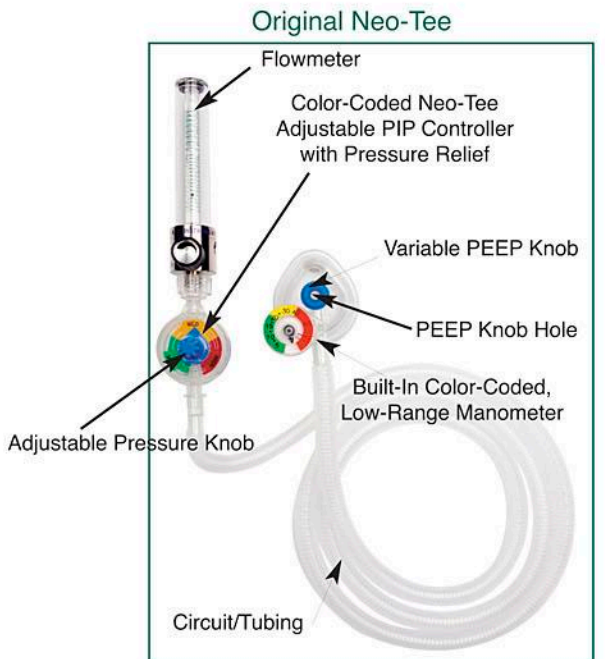
*Your Need . . .  
 . . . our Innovation®!*

introducing a better way to deliver positive pressure ventilation to your infant patients with convenient in-line viewing and reliable easy-to-read airway pressure dial.

Mercury Medical® is pleased to announce the first single-patient-use infant T-piece Resuscitation device.

The Neo-Tee is flow-controlled and pressure limited. It offers the ability to measure a more consistent, targeted Peak Inspiratory Pressure (PIP) and Positive End-Expiratory Pressure (PEEP).

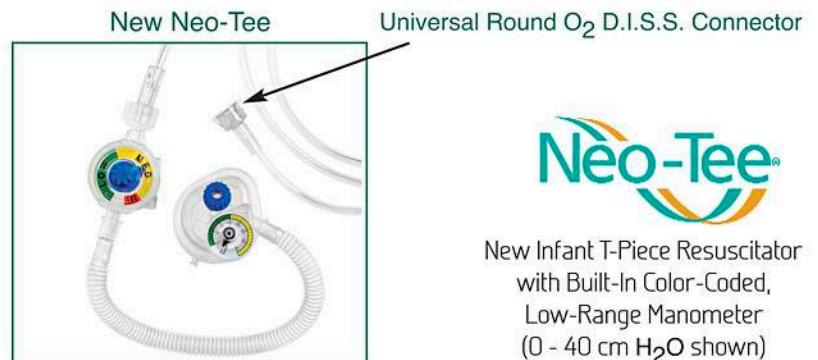
With the new Neo-Tee, there's absolutely NO capital equipment to purchase and it is completely disposable. Even Better . . . No fatigue from squeezing a bag since there is no bag to squeeze!



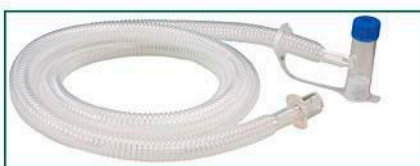
Patent # US 5,557,049 B1, # D,672,454  
 Other Patents Pending

**Providing affordable  
 T-Piece Resuscitation for every NICU bed.**

Undoubtedly an industry first, Neo-Tee is the only disposable T-Piece device on the market today that offers a built-in monitor “on the Tee” for convenient, in-line viewing of delivered airway pressure. While budget constraints may prevent having capital equipment for the best patient care where its needed the most, just imagine having an affordable device like the Neo-Tee at every NICU bedside.



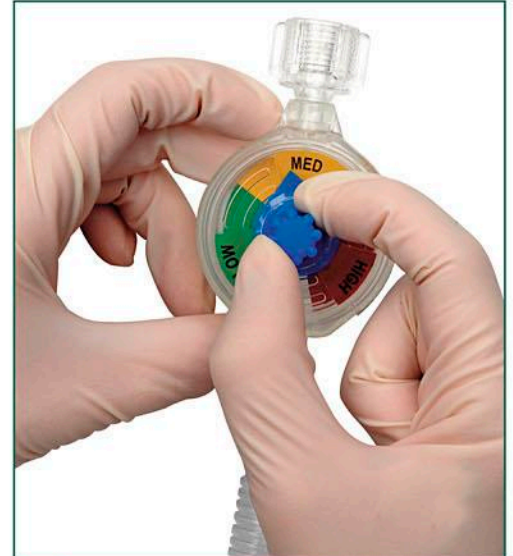
**New Infant T-Piece Resuscitator  
 with Built-In Color-Coded,  
 Low-Range Manometer  
 (0 - 40 cm H<sub>2</sub>O shown)  
 and Pressure Relief**



**NEW!**  
 T-Piece Circuits Now Available!  
 See Page 23 for ordering information

The Neo-Tee® includes a built-in pressure relief valve as an added safety measure, limiting ventilatory pressures to 40 cm of H<sub>2</sub>O and the stay-put PEEP valve allows for quick and easy PEEP pressure adjustments as needed.

| Advantages   |  |
|--|--|
| In-Line Controller                                     | <ul style="list-style-type: none"> <li>Allows clinicians to change airway pressure “in-line” closer to the patient.</li> </ul>   |
| Disposable   | <ul style="list-style-type: none"> <li>Reduced chance of cross-infection, No cleaning required</li> <li>No capital equipment costs, Affordable at every bedside</li> <li>Space saving</li> <li>Lightweight and easily transported</li> </ul>   |
| Portable, Built-in Manometer on Tee                    | <ul style="list-style-type: none"> <li>Convenient in-line viewing, accurate and easy-to-read dial (+/- 3 cm H<sub>2</sub>O up to 15 cm H<sub>2</sub>O and +/- 5 cm H<sub>2</sub>O above 15 cm H<sub>2</sub>O) accuracy (choice of 0 - 40 cm H<sub>2</sub>O or 0 - 60 cm H<sub>2</sub>O)</li> </ul>     |
| Adjustable PIP Controller/<br>Built-in Pressure Relief | <ul style="list-style-type: none"> <li>Compact for setting/adjusting pressure</li> <li>Connects to a flowmeter</li> <li>Safety Pressure Relief activates at 40 cm H<sub>2</sub>O,</li> <li>The Adjustable PIP Controller allows clinicians to limit airway pressure to 40 cm H<sub>2</sub>O</li> </ul> |
| Variable PEEP Knob                                     | <ul style="list-style-type: none"> <li>Increasing/Decreasing Pressure made easy</li> <li>Easy-to-turn dial, stays put at desired pressure</li> </ul>   |
| Variety of Mask Sizes/Styles                           | <ul style="list-style-type: none"> <li>Choice of clear anatomical and round silicone face masks in both neonatal and infant sizes</li> </ul>   |



Neo-Tee

Comes with an adjustable, easy-to-read pressure dial and safety pressure relief

Neo-Tee

| Product Specifications                                  |   |
|---|---|
| Delivered Oxygen Concentration                          | Up to 100%  |
| Cycling Pressure Range                                  | 0 to 40 cm H <sub>2</sub> O   |
| Dead Space  | 4 ml  |
| Expiratory Resistance                                   | 0.2 cm H <sub>2</sub> O at minimum PEEP setting @ 6 LPM   |
| Inspiratory Resistance                                  | 1.6 cm H <sub>2</sub> O at minimum PEEP setting @ 6 LPM   |
| Input Gas Flow Range                                    | Minimum 5 LPM<br>Maximum 15 LPM   |
| Integral Patient Circuit Manometer Accuracy             | - up to 15 cm H <sub>2</sub> O +/- 3 cm H <sub>2</sub> O<br>- Greater than 15 cm H <sub>2</sub> O +/- 5 cm H <sub>2</sub> O   |
| Maximum Pressure on Controller (dependent on flow rate) | 40 cm H <sub>2</sub> O +/- 5 cm H <sub>2</sub> O @ 15 LPM   |
| Operation Time  | Full E cylinder @ 660 Liters @ 5 LPM - 44 minutes   |
| Device Mass   | 83 g  |
| Patient Connection on T-Piece                           | 15mm Taper Female (ISO 5356-1)  |
| PIP Controller Connection                               | Mates with fittings that meet CGA 1240 oxygen D.I.S.S. standard   |
| Gas Delivery Pressures:                                 |   |
| Peak Inspiratory Pressure Range                         | 0 - 40 cm H <sub>2</sub> O  |
| Positive End Expiratory Pressure PEEP Range             | @ 5 LPM up to approximately 2 cm H <sub>2</sub> O<br>@ 8 LPM up to approximately 6 cm H <sub>2</sub> O<br>@ 10 LPM up to approximately 9 cm H <sub>2</sub> O<br>@ 15 LPM up to approximately 15 cm H <sub>2</sub> O |



Neo-Tee

Infant T-Piece Resuscitator Adjustable PIP Controller with built-in pressure relief (Shown on Flowmeter)

ISO 13485

CE  
DEHP-Free





Infant T-Piece Resuscitator  
Flow-Controlled and Pressure Limited

Ordering Information

| Part Number      | Description   | Quantity |
|------------------|---|----------|
| 10-50800         | Neo-Tee Infant T-Piece Resuscitator, Circuit, Controller, No Mask, 0 - 60 cm H <sub>2</sub> O Manometer   | 10/Box   |
| 10-50801         | Neo-Tee Infant T-Piece Resuscitator, Circuit, Controller, Clear Anatomical Infant Face Mask, 0 - 60 cm H <sub>2</sub> O Manometer                                   | 10/Box   |
| 10-50802         | Neo-Tee Infant T-Piece Resuscitator, Circuit, without Controller, No Mask, 0 - 60 cm H <sub>2</sub> O Manometer   | 10/Box   |
| 10-50803         | Neo-Tee Infant T-Piece Resuscitator, Circuit, without Controller, Clear Anatomical Infant Face Mask, 0 - 60 cm H <sub>2</sub> O Manometer                           | 10/Box   |
| 10-50804         | Neo-Tee Infant T-Piece Resuscitator, Circuit, Controller, No Mask, 0 - 40 cm H <sub>2</sub> O Low Range Manometer   | 10/Box   |
| 10-50805         | Neo-Tee Infant T-Piece Resuscitator, Circuit, Controller, Clear Anatomical Infant Face Mask, 0 - 40 cm H <sub>2</sub> O Low Range Manometer                         | 10/Box   |
| 10-50806         | Neo-Tee Infant T-Piece Resuscitator, Circuit, No Controller, No Mask, 0 - 40 cm H <sub>2</sub> O Low Range Manometer  | 10/Box   |
| 10-50807         | Neo-Tee Infant T-Piece Resuscitator, Circuit, No Controller, Clear Anatomical Infant Face Mask, 0 - 40 cm H <sub>2</sub> O Low Range Manometer                      | 10/Box   |
| 10-50808         | Neo-Tee Infant T-Piece Resuscitator, In-Line Controller, Circuit, No Mask, 0 - 60 cm H <sub>2</sub> O Manometer   | 10/Box   |
| 10-50809         | Neo-Tee Infant T-Piece Resuscitator, In-Line Controller, Circuit, Clear Anatomical Infant Face Mask, 0 - 60 cm H <sub>2</sub> O Manometer                           | 10/Box   |
| 10-50810         | Neo-Tee Infant T-Piece Resuscitator, In-Line Controller, Circuit, No Mask, 0 - 40 cm H <sub>2</sub> O Low Range Manometer   | 10/Box   |
| 10-50811         | Neo-Tee Infant T-Piece Resuscitator, In-Line Controller, Circuit, Clear Anatomical Infant Face Mask, 0 - 40 cm H <sub>2</sub> O Low Range Manometer                 | 10/Box   |
| 10-50812         | Neo-Tee Infant T-Piece Resuscitator, Circuit, Controller, Clear Anatomical Infant Face Mask, 0 - 60 cm H <sub>2</sub> O Manometer, packaged in drawstring bag       | 10/Box   |
| 10-50813         | Neo-Tee Infant T-Piece Resuscitator, Circuit, without Controller, No Mask, 0 - 60 cm H <sub>2</sub> O Manometer, packaged in drawstring bag                         | 10/Box   |
| 10-50814         | Neo-Tee Infant T-Piece Resuscitator, In-Line Controller, Circuit Infant & Neonatal Anatomical Mask, 0 - 40 cm H <sub>2</sub> O Manometer packaged in drawstring bag | 10/Box   |
| 10-50900         | T-Piece Resuscitation Circuit Only - 6' Length  | 10/Box   |
| 10-50901         | T-Piece Resuscitation Circuit/Infant Cushion Mask - 6' Length   | 10/Box   |
| 10-50902         | T-Piece Resuscitation Expandable Circuit Only - 5' Length   | 10/Box   |
| 10-50903         | T-Piece Resuscitation Expandable Circuit Only/Infant Cushion Mask - 5' Length   | 10/Box   |
| 10-50904         | T-Piece Resuscitation Circuit - 6' Length #0 Round Silicone Mask  | 10/Box   |
| 10-55321         | Connector Adapter for Transport (non-in-line application)   | 10/Box   |
| <b>MASKS</b>     |   |          |
| 10-50504         | Clear Anatomical Infant Face Mask   | 20/Box   |
| 10-50505         | Clear Anatomical Neonatal Face Mask   | 20/Box   |
| 10-50601         | Round Type Silicone Face Mask, Size 0 (48mm)  | 10/Box   |
| 10-50602         | Round Type Silicone Face Mask, Size 1 (60mm)  | 10/Box   |
| <b>Test Lung</b> |   |          |
| CK-1021          | Infant Test Lung (64 ml)  | 10/Box   |



**NEW . . . PROTECTIVE  
CAP & STRAP  
(dust cap)**

- Keeps port clean, especially during transport.
- Does not get lost or present a possible choking hazard.
- Pressures can quickly be set when cap is on.



#10-55321  
Connector Adapter



## MATRIX (QUICK GUIDE)

| Product # | Neo-Tee Type     |                       | Manometer Type |        | Controller Type |         | Mask Type   |                | Bag  |             |
|-----------|------------------|-----------------------|----------------|--------|-----------------|---------|-------------|----------------|------|-------------|
|           | Original Long 6' | New in-line Short 12" | 0 - 60         | 0 - 40 | Standard        | In-Line | Clear Anat. | Round Silicone | Std. | Draw-string |
| 10-50800  | X                |                       | X              |        | X               |         |             |                |      |             |
| 10-50801  | X                |                       | X              |        | X               |         | X           |                | X    |             |
| 10-50802  | X                |                       | X              |        |                 |         |             |                | X    |             |
| 10-50803  | X                |                       | X              |        |                 |         | X           |                | X    |             |
| 10-50804  | X                |                       |                | X      | X               |         |             |                | X    |             |
| 10-50805  | X                |                       |                | X      | X               |         | X           |                | X    |             |
| 10-50806  | X                |                       |                | X      |                 |         |             |                | X    |             |
| 10-50807  | X                |                       |                | X      |                 |         | X           |                | X    |             |
| 10-50808  |                  | X                     | X              |        |                 | X       |             |                |      | X           |
| 10-50809  |                  | X                     | X              |        |                 | X       | X           |                |      | X           |
| 10-50810  |                  | X                     |                | X      |                 | X       |             |                |      | X           |
| 10-50811  |                  | X                     |                | X      |                 | X       | X           |                |      | X           |
| 10-50812  | X                |                       | X              |        | X               |         | X           |                |      | X           |
| 10-50813  | X                |                       | X              |        |                 |         |             |                |      | X           |
| 10-50814  |                  | X                     |                | X      |                 | X       | X (2)       |                |      | X           |

The logo for Mercury Medical, featuring the word "Mercury" in a dark red, italicized serif font, followed by "Medical" in a black, italicized serif font. A thin red arc is positioned above the "y" in "Mercury". A registered trademark symbol (®) is located at the top right of the word "Medical".

*Mercury*Medical®

Your Need . . . Our Innovation®

11300 - 49th Street North  
Clearwater, Florida 33762  
[www.mercurymed.com](http://www.mercurymed.com)